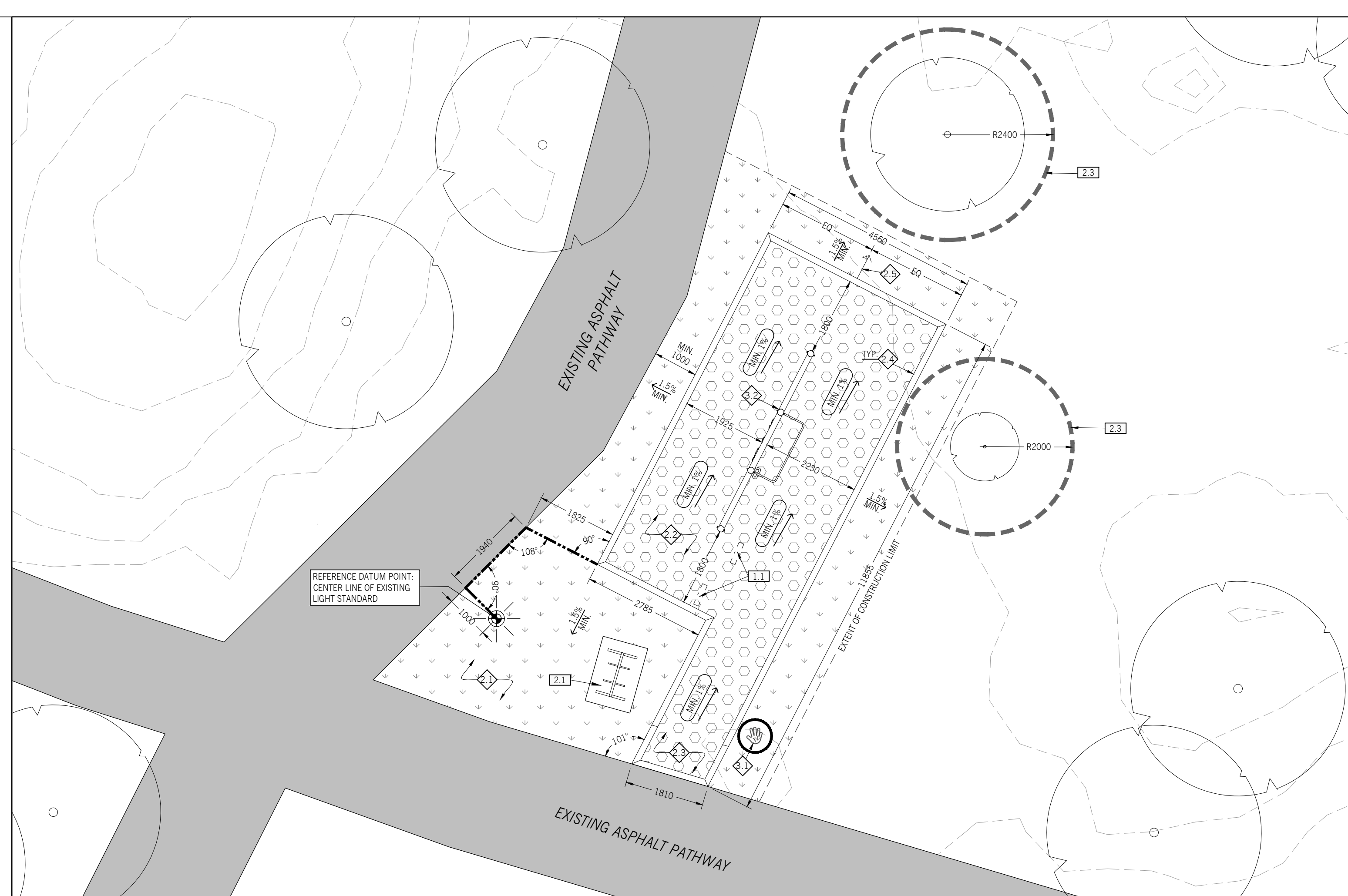


STOP 1
L1.1

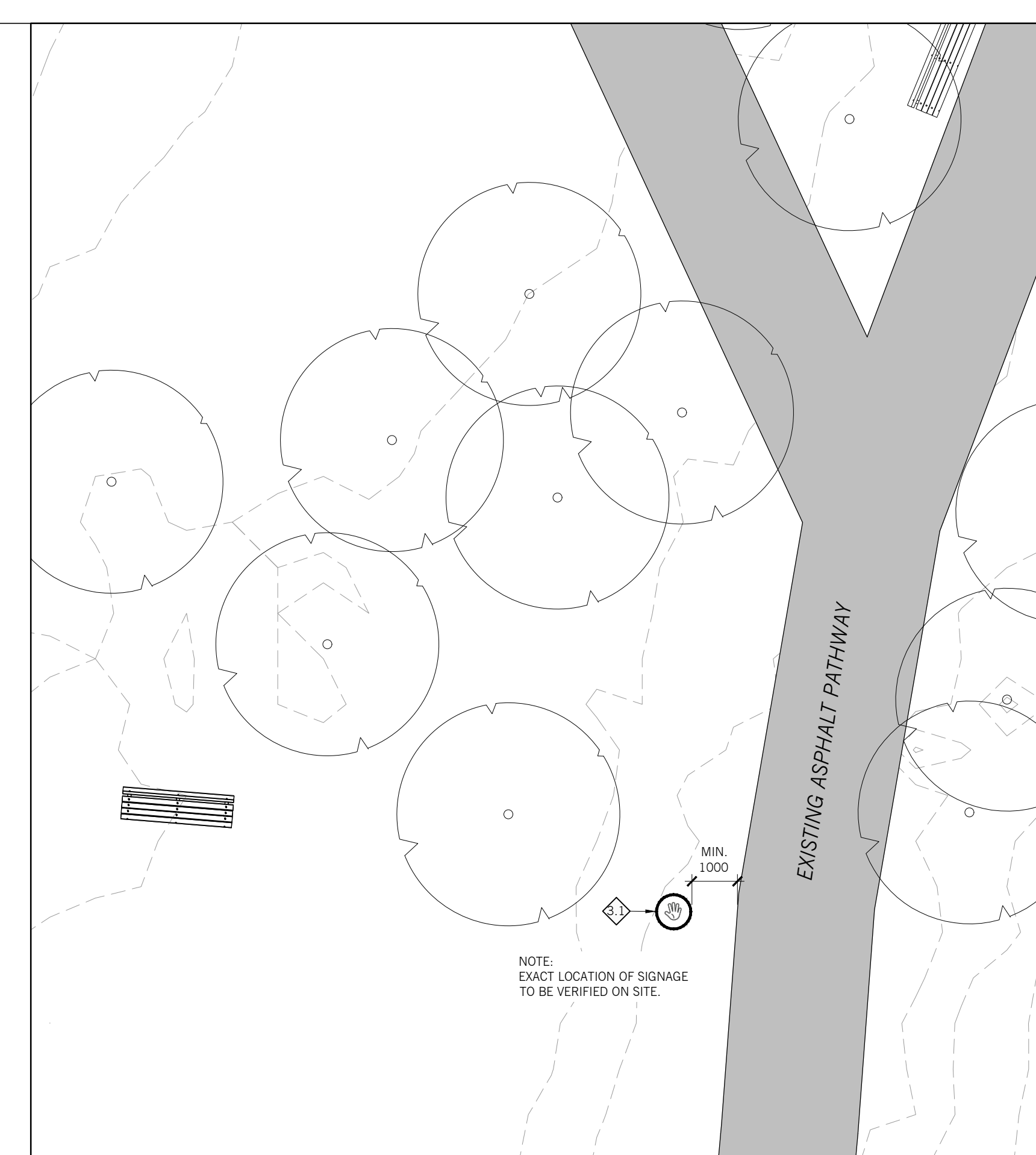
STOP 2
L1.1

STOP 3
L1.1

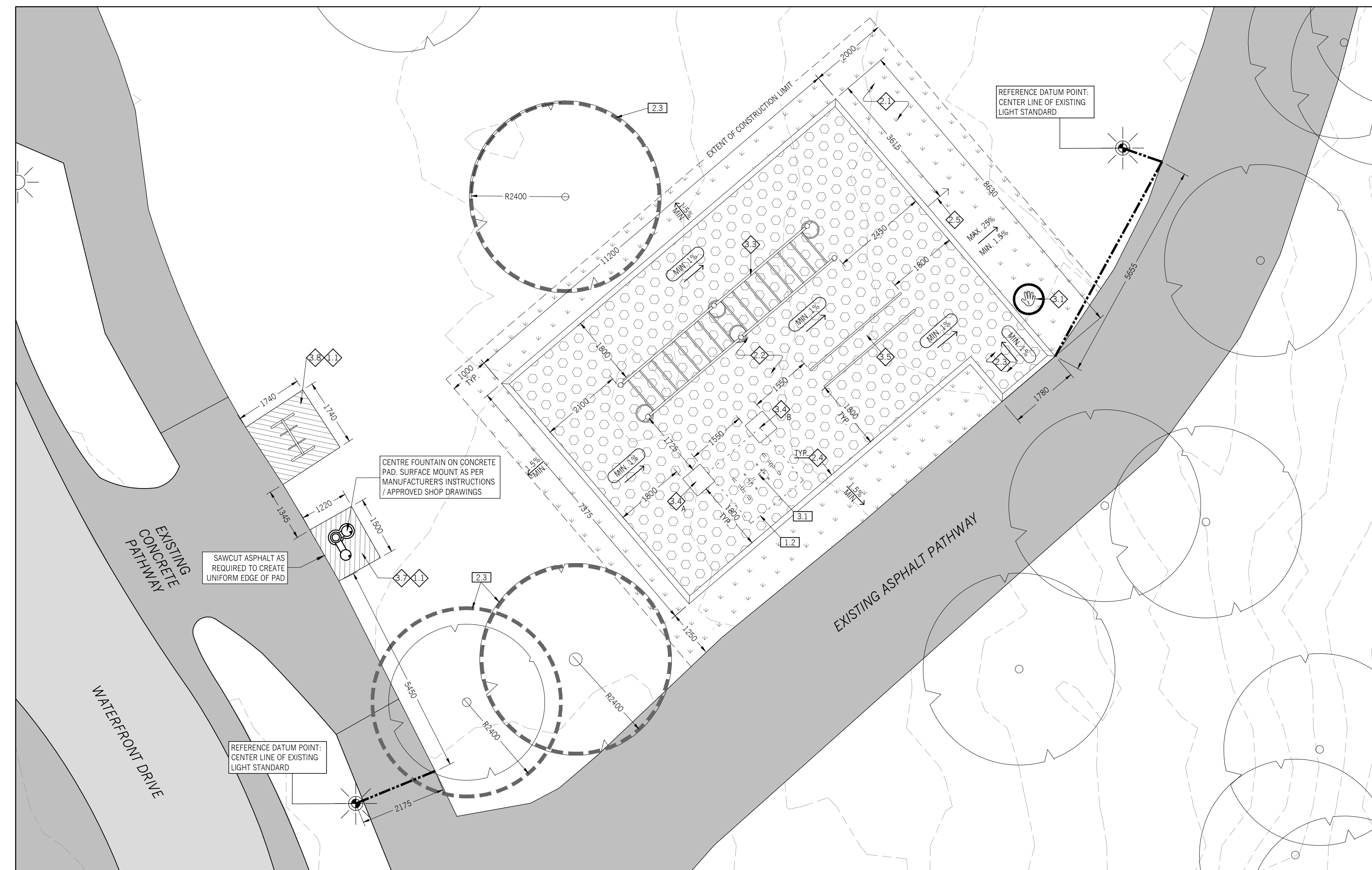
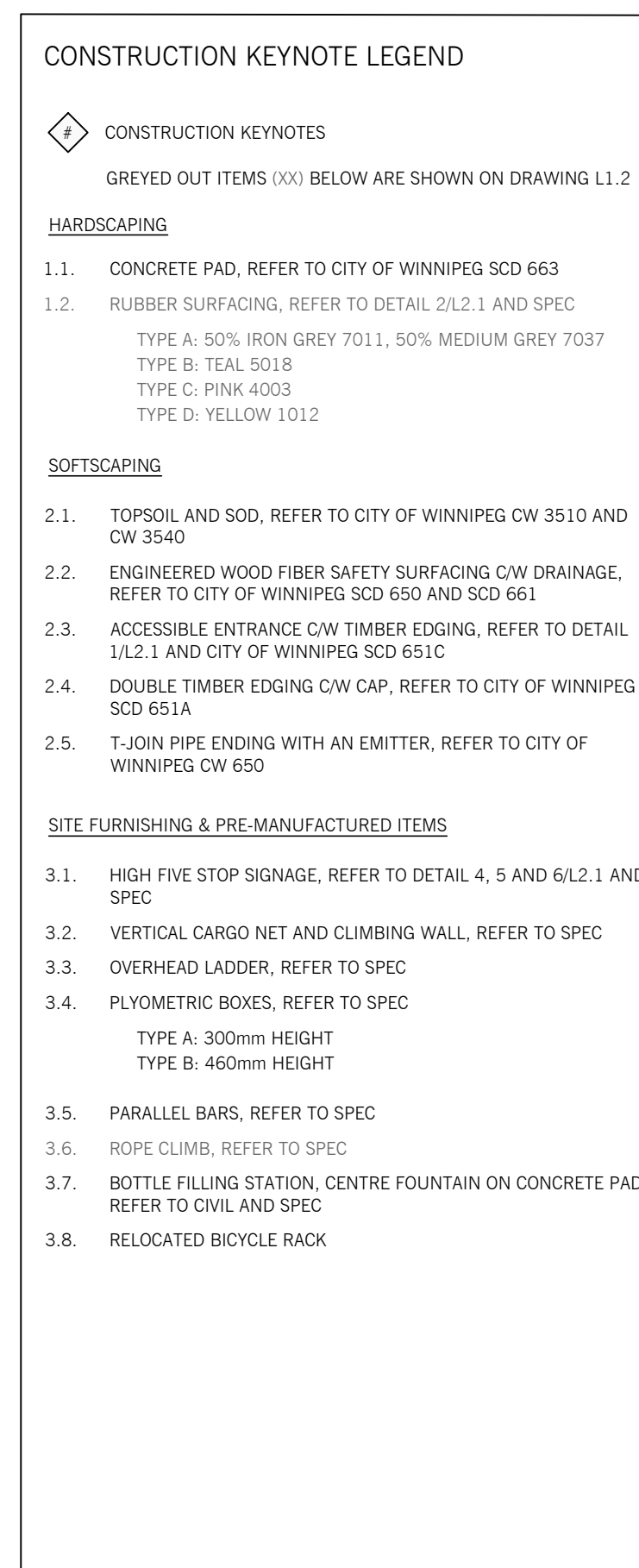
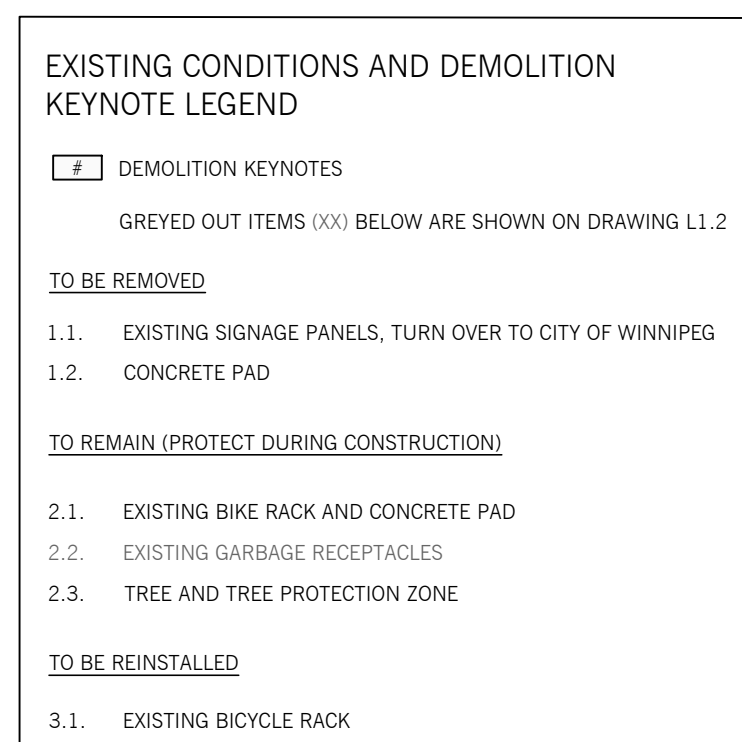
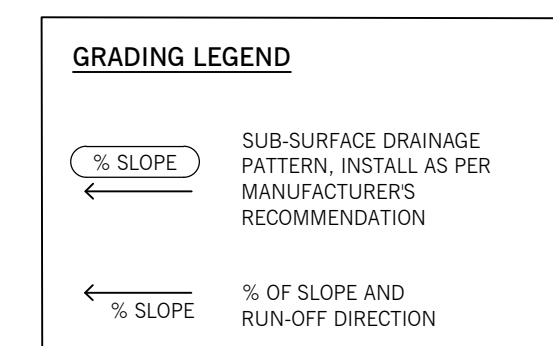
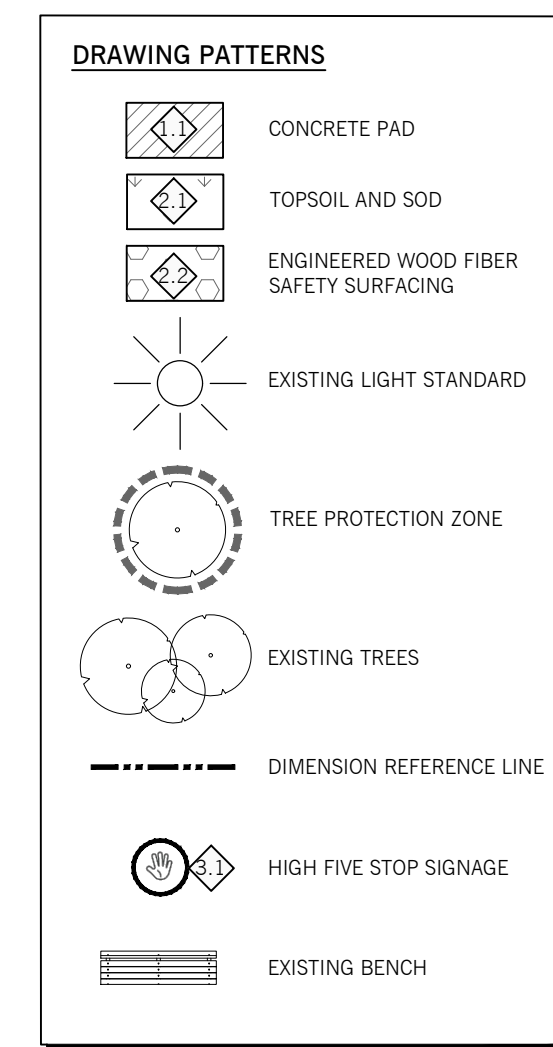
1
L1.1
1:2000



2
L1.1
1:75



3
L1.1
1:100



4
L1.1
1:75

Drawings and specifications, as instruments of service are the property of the architect, the copyright in the same being reserved to him. No reproduction may be made without the permission of the architect and when made, must bear his name. All prints to be returned to the architect. The contractor shall verify dimensions and data noted herein with conditions on the site and is held responsible for reporting any discrepancy to the architect for adjustment. This drawing shall not be used for building purposes until countersigned by:

SUBCONSULTANTS

PROFESSIONAL'S SEAL

REV	DATE	DESCRIPTION	BY
02	24 / 11 / 08	ISSUED FOR CONSTRUCTION	CA
01	24 / 09 / 05	ISSUED FOR 65% REVIEW	CA
00	YY / MM / DD	DESCRIPTION	BY

ft3
Architecture
Landscape
Interior Design

CONSULTANT FILE NAME
23692 STEPHEN JUBA PARK FITNESS TRAIL

CLIENT
CITY OF WINNIPEG
PLANNING & URBAN DESIGN DIVISION
PLANNING, PROPERTY & DEVELOPMENT DEPARTMENT



STEPHEN JUBA PARK FITNESS TRAIL

BD OPPORTUNITY NO.: 971-2024 SHEET: 2 OF 6

LANDSCAPE SITE PLANS
STOPS 1 - 3

DESIGN	DRAWING	DATE: Y / M / D
KS/BG	KS/BG	24 / 11 / 08
CHECKED	APPROVED	PROJECT NO.
CA	CA	23.692

L1.1